



**Marwell  
Wildlife**

## **KS1 Wet Weather Activity Pack**



Introduction.....	3
Wet Weather Map.....	4
General Questions.....	5
<b>Undercover Activities</b>	
Penguin Cove.....	6
Savannah Tracks.....	7
Giraffe House.....	8
Lemur Loop .....	9
Heart of Africa.....	10
Amur Leopards.....	11
Wild Explorers.....	12
Aridlands.....	13
Desert Carnivores.....	14
Amur Tigers .....	15
Okapi Houses .....	16
Cold Blooded Corner .....	17
Siamang Gibbon House .....	18
Tropical House .....	19
Semi-aquatic Mammals.....	20

## Introduction

As we all know, the British weather is unpredictable at best, and sometimes that means that however carefully you plan a school trip there is always the chance of it raining all day. But that doesn't mean you can't still enjoy a visit to Marwell Zoo!

This pack is full of ideas for short indoor activities to help keep pupils engaged if you need to remain inside the same exhibit for a long time. As our animals do sometimes choose to keep out of sight, many of the activities are designed to work even when the animals themselves are not visible.

There is also a list of general questions which you can ask to focus the children's attention on any animal that takes their interest as you move around the park.

Finally, and perhaps most importantly, we have included a map detailing all our main undercover areas so if the rain catches you out, you can find the nearest place to take shelter. (There are also other small roofed areas around the park that are not included on the map, for example the warthog and rhino houses.)

**Please note: due to animal management reasons, some of the animals or buildings available for viewing may be different to those listed.**

## Curriculum Links

### SCIENCE

#### Working Scientifically

- observing closely, using simple equipment
- using their observations and ideas to suggest answers to questions

#### Year 1 Animals, including humans

- identify and name a variety of common animals, including fish, amphibians, reptiles, birds and mammals
- describe and compare the structure of a variety of common animals (fish, amphibians, reptiles, birds and mammals, including pets)

### MATHS

#### Year 1 Number – number and place value

- count to and across 100, forwards and backwards, beginning with 0 or 1, or from any given number

#### Year 2 Statistics

- ask and answer simple questions by counting the number of objects in each category and sorting the categories by quantity



# Wet Weather Map



1. Penguin Cove
2. Savannah Tracks
3. Giraffe House
4. Lemur Loop
5. Heart of Africa
6. Amur Leopards
7. Wild Explorers
8. Aridlands
9. Amur Tigers
10. Okapi Houses
11. Tropical House
12. Cold Blooded Corner
13. Siamang Gibbon House
14. Life Among the Trees
15. Semi-aquatic Mammals

## General Questions

This is a short list of simple questions that you can ask about any animals that the children show interest in as you explore the park. They may also be useful for extending the children's interest if you need to remain undercover in the same exhibit for a long time.

- ❖ What animals can you see?
- ❖ How many are there?
- ❖ What colours are they?
- ❖ How do they move?
- ❖ Can you see what they eat? If not, can you guess what they might like to eat?
- ❖ What kind of place do you think they might come from? (e.g. *hot or cold, wet or dry*)
- ❖ Do they have fur/feathers/scales?

The answers to most of these questions will be self-evident, otherwise refer to the animal ID signs to find information on habitat, diet etc.

Also remember to keep an eye out for other information signs around the park. You can use these to find out extra facts about the animals you are looking at, or draw the children's attention to any points of interest.





## Penguin Cove

### Look out for:

**Different ways the penguins can move.** What verbs ('doing words') can you think of to describe what they are up to? (e.g. swimming, waddling, stretching, flapping, hopping, nibbling etc...)

**Can you see more penguins on the land or in the water?** Why do you think this might be?

**What can you find in the underwater cavern?** How many starfish? Fossil fish bones? Clams? Handprints (*clue: there is only one!*)?

### Have a go at:

**Waddling like a penguin!** Hold your arms out straight by your sides like wings, and keep your knees close together as you walk.

Do you think penguins are better at walking or swimming? Which one are you better at?

### True or False?

**Penguins are birds.**

**TRUE:** Even though penguins are really good at swimming instead of flying, they are still birds. Their flippers are special types of wings. They also have beaks and feathers. See if you can spot one moving under the water. Does it look like it could be flying?



## Savannah Tracks

### Look out for:

**Some replica skulls on the far side of the Outpost.** Which one belongs to the cheetah? Is it bigger or smaller than the lion and leopard skulls? Why do you think that might be? *(To help them run faster by being light and streamlined. The cheetah also eats smaller prey.)*

**Look at the teeth on all of the skulls.** Can you see which of the animals have sharp teeth for eating meat (*lion, leopard, cheetah*), and which have flat teeth for grinding up plants (*scrub hare, warthog*)?

If you can see the real cheetah in the enclosure below, look out for the following features and think about why the cheetah has them:

- ❖ **Spotty pattern** – to keep the cheetah camouflaged
- ❖ **Long legs** – so the cheetah can take huge strides when it is running
- ❖ **Long tail** – to help the cheetah balance and turn round corners at speed
- ❖ **Black 'tear marks'** going down the cheetah's face - thought to help the cheetah keep the sun out of its eyes, just like a pair of sunglasses!

### True or False?

**Cheetah can run at speeds of up to 70 miles per hour.**

**TRUE:** That's as fast as your car on the motorway! But cheetah can only run at top speed for about 30 seconds. Then they need to go and have a good rest.



## Giraffe House

### Look out for:

Long dark tongues! Giraffes have very long tongues which can be up to 45cm long! They are a dark blue-grey colour to protect them from getting sunburnt. They use their flexible tongues to grasp leaves from the very tops of trees.



### Have a go at:

#### Who's who at the zoo?

If the giraffes are in their house, use the photo frames on the opposite wall to try and work out which giraffe is which. Be careful, it's not as easy as it looks...!

#### Giraffe gymnastics

Giraffes are so tall they almost have to do the splits to have a drink!

Try bending down like a drinking giraffe. Put your feet almost as far apart as they can go, then bend down to touch the floor, keeping your knees straight.

OH NO! Imagine a lion is coming! Try to run away quickly, like a giraffe would have to if it is in danger. Is it easy to do?

Even adult giraffes have to be careful when they are bending down to drink. This is when lions and other predators have their chance to attack.



#### Peekaboo!

One of the big, upright wooden pillars has a tiny painting of a bird peeping out of it – can anybody find it? *(it is on the pillar nearest the exit, about half way up)*



## Lemur Loop

The lemurs are another group of noisy animals here at Marwell. Can you hear them now? You will know it if you can! If not, listen out for their calls as you go around the park – when one lemur starts, the others all quickly join in!

### Look out for:

Three different types of lemur: ring-tailed lemur, black and white ruffed lemur and crowned lemur. As a group, see if you can think of 5 adjectives to describe each type (e.g. fluffy, sleepy).

### Have a go at:

#### Following the 'lemur'

When a troop of ring-tailed lemurs travels along the ground, they all hold their long tails up high in the air. Why do you think they do this? (So they can see where all the members of their group are). One of the female lemurs is in charge and she leads all the others, showing them where to go.

As you go around the Giraffe House and Lemur Loop, try playing your own game of Follow the Leader. Choose someone to be in charge (if you want to be even more like the lemurs, pick a girl!) and then walk along in single file behind her. Everyone should hold one hand up in the air to be their 'tail', and follow the leader where she goes and copy what she does. Try taking it in turns to be the leader, and see what happens!

#### Spotting the biggest and smallest lemur

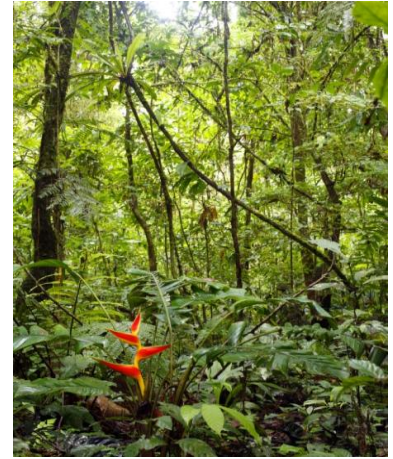
**Look behind the Lemur Tree of Life mural. Can you find the biggest lemur? Which is the smallest?**



## Heart of Africa

**What kind of place do you think it looks like in here?** Clue: look at all the model trees on the walls. (In the “heart of Africa” there are lots of rainforests. That is what this building is designed to look like)

Why is it so dark in a rainforest? (because the trees would block out lots of the light)



There is one corner of the room where it looks like the rainforest is not doing so well. Can you find it?

What do you think has happened here? (people have cut down/burnt the trees).

Read the sign on the left of this area to find out how you can help (by recycling aluminium cans!)

### Look out for:

**Some rainforest animals hiding in the paintings on the walls and up by the ceiling.** What sorts of animals can you find? (monkeys – mandrill and potto, bird – hornbill, bats, gliding squirrel)

**Lots of flashy fish in the tank.** These fish all have their own special job to do in their community. Some of them have big lips to suck out tiny bugs from holes in the rocks. Can you see any fish sucking on the rocks?

Some of these fish have black and yellow bumblebee stripes. Can you see any? They help the other fish by eating the tiny lice that live on their bodies!

How many other types of fish can you see in the tank?



### Have a go at:

#### Bongo or Buffalo?

Try comparing the bongo to the forest buffalo. If the real animals are not indoors, use the pictures and information on the signs.

- ❖ Which one do you think is stronger?
- ❖ Which one do you think is faster?
- ❖ Which one do you think has better camouflage for the rainforest?

#### Hooray for horns!

See if you can match the animal horns at one end of the building to the pictures on the sign to the right. Which animals have twisty horns? Which animal has the biggest horns? In your groups, think about what is similar about all the horns, and what is different.



## Amur Leopards

The Amur leopards have two undercover areas for you to try and spot them from – the ground-level viewing window and up the ramp at the Leopard Lookout.

### Look out for:

**Lots of different places for the leopards to explore.** Try and guess where they might go if they wanted to:

- ❖ Sleep
- ❖ Eat
- ❖ Hide
- ❖ Climb
- ❖ Look out over the park

Can you see the path the leopard likes to walk on to patrol his territory?

Can you see where he sharpens his claws? (*tree trunk in the middle*)

What else can you see in the leopards' enclosure? (*bushes, logs, rocks, trees etc.*)

So what kind of place do you think the Amur leopard would live in the wild? (*rocky forest*)

### Leopard Lookout

Up here you can also look over the field on the opposite side to the leopards' enclosure. Can you see any animals down there? (*it varies, but often you can see Hartman's zebra and sometimes Arabian oryx in the distance. Also birds such as rooks, jackdaws, pigeons, robins, blackbirds and even helmeted guinea fowl!*)

### Have a go at:

**Closing your eyes and listening to the birds.** How many different birds can you hear?

If you can also hear a strange gruff roar, that is probably one of the leopards!



## Wild Explorers

### Look out for:

**Footprints on the wall.** There are lots of animal footprints on the wall in Room 1. Can you spot the prints of the animals that live in Wild Explorers? (Grevy's Zebra, Scimitar Horned Oryx and White Rhino).

**The Rhino's heads.** Rhinos have small eyes, big nostrils and big ears. Can you guess which senses White Rhinos use the most? Their huge nostrils are good for smelling and their big ears, which they can move about, are good for hearing. However, they have small eyes and very poor eyesight.



### Have a go at:

**Making shadow puppets!** Look closely at the animals on the large video screens in Room 1. What features do they have and what are they doing? Take it in turns to stand so your shadow can be seen on the screen. Now act like one of the animals! Can your friends guess which one you are? How did they know?

**Playing spot the difference!** Look carefully at the 'Wild Explorers Identifying Species' sign in Room 2. How many differences can you find between the three different species? How many differences can you spot between each species of zebra, rhino and antelope?





## Aridlands

Think about the type of animals in here and what their homes look like. So what kind of place do you think the 'aridlands' might be? Clue: look for a big round sign that tells you what the aridlands lack (water - so it is hot and dry).

### Look out for:

**Long twisty horns on the addax and dorcas gazelles.**

If you've already been to the Heart of Africa house, you might remember seeing some addax horns there. Do all of the addax and dorcas gazelles have horns? (*they should do – both males and females*)

DID YOU KNOW? Antelope like these are different to deer because they only ever grow one pair of horns. Male deer grow a new set of antlers every year.

Sometimes the antelope's horns grow crooked or get broken off. This can happen in captivity as well as in the wild.

### Have a go at:

**Counting how many addax or gazelles you can see with:**

- ❖ 2 horns
- ❖ 1 horn
- ❖ No horns
- ❖ A crooked or broken horn

If there are any baby addax or gazelles - look for the tiny horns, just beginning to grow.



## Desert Carnivores

### Look out for:

**Pawprints in the sand.** Can you see the tracks that the Yellow mongoose have made around their enclosures? Where do they lead? You might even be able to find some shoeprints – who might have made these? (*the zookeepers*)

### Have a go at:

**Imagining you are a scientist studying these animals out in the desert!** Think about your answers to the following questions:

❖ What would it feel like in the desert?

*Very dry, hot, sunny, cold at night, lonely etc...*

❖ What scientific equipment would you take?

*Any (e.g. binoculars, notebook, stopwatch, radio collars etc...)*

❖ What else would you need?

*Lots of water, sun cream, tent, hat, food etc...*

❖ What animals would you look out for?

*Any desert animals e.g. meerkats, camels, antelope, sand cats, snakes, tortoises, scorpions etc...*

### True or False?

**Yellow Mongoose throw eggs.**

**TRUE:** Yellow mongoose mostly feed on invertebrates such as insects and spiders, but they have been seen eating eggs and smaller animals including rodents and birds.

To get in to bird's eggs they have been seen rolling an egg close to a stone or rock and then throwing the egg between their legs so the egg will hit the stone or and break!





## Amur Tigers

### Look out for:

**Parts of the tigers that help them get their food.** Firstly, what do tigers like to eat? (Meat, such as deer and wild pigs).

So what kind of teeth do you think they might have? (Big, sharp etc.)

Have a good look at their:

- ❖ Massive paws
- ❖ Stripes for camouflage
- ❖ Two eyes facing forwards to help judge distances



### Have a go at:

#### Predator peepers

Most plant-eating animals have eyes on the sides of their heads so they can watch out for danger. But tigers and other predators have both their eyes facing forwards to help them judge how far away things are (so they know when to pounce).

You can test this out by holding your arms out to the side and pointing your index fingers. See if you can bend your arms and touch your fingertips together in the middle. It should be quite easy to do. Try it again with one eye closed. Now how easy is it?

#### Creeping tigers

In India, villagers sometimes wear masks on the back of their heads to stop tigers attacking them. It works because tigers like to sneak up on their prey from behind, so if they see a face looking at them, they will keep away.

This game is a variation on 'Grandmother's Footsteps'. Choose one person to be a deer, and the rest of the group are the tigers. Get the tigers into a line facing the deer, who stands a little way off with his back to them. Then the tigers have to slowly creep up on the deer, holding their hands as tiger claws if they like. Every so often, the deer should quickly look behind him, and the tigers FREEZE! If the deer sees any of the tigers moving, they are out. The game continues until either all the tigers are out, or one of them manages to reach the deer and (gently) pounces!

### True or False?

**Amur tigers (the type you can see here at Marwell) are the biggest cats in the world.**

**TRUE:** Tigers are the largest of the big cats, and Amur tigers are the largest tigers of all!

## Okapi Houses

**These animals are very shy so please remember to be quiet in their houses.**

### Look out for:

**The okapi's long, blue tongue.** It is so long the okapi can even use it to clean out their eyes and ears! In one of the okapi houses there is a mirror to look in – how close can you get to licking your eyes or ears?

**The okapi's huge ears.** Why are these useful to the okapi? *(to catch every sound and warn them of danger)*

**The okapi's good camouflage.** What is camouflage and why do they need it? *(so the okapi can hide safely in the rainforests where they live)*

**DID YOU KNOW?** Even though okapi are such big animals, they are so shy and well camouflaged that scientists didn't even know they existed until 1901!

### Have a go at:

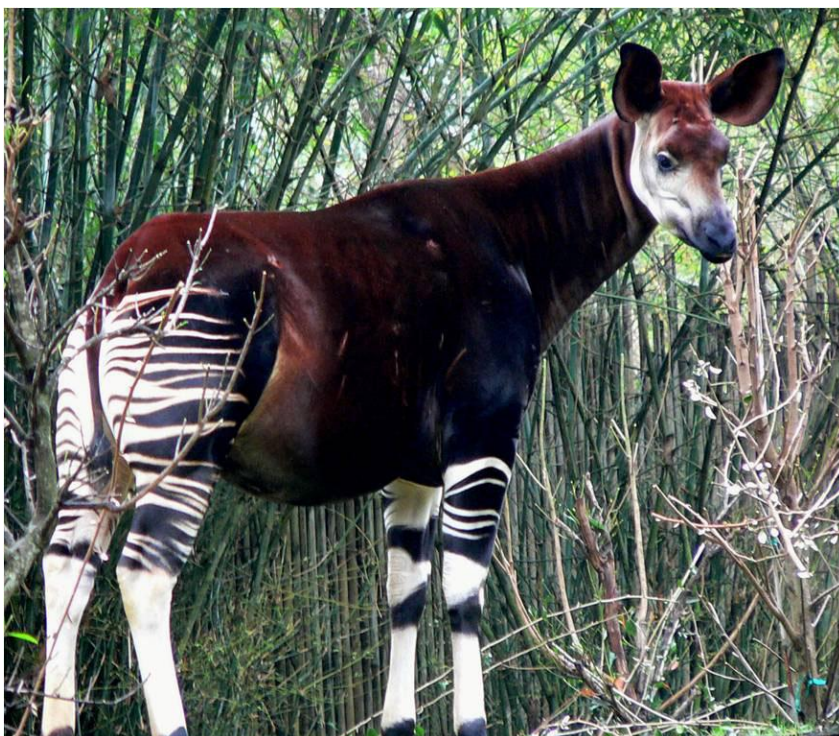
#### Who's who?

The stripe pattern on the okapi's legs and rear is unique to each okapi – just like a zebra's stripes or our fingerprints! Using the photo ID signs on the wall, can you work out the names of the okapi you can see?

#### True or false?

**The okapi's closest animal relative is the zebra.**

**FALSE:** Although the okapi have stripes like a zebra, they are actually cousins of the giraffe! Look closely at their faces, little horns and long necks – can you see the family resemblance?



## Cold Blooded Corner

All the animals here are cold-blooded reptiles. What does cold-blooded mean? (*cannot maintain a constant body temperature and take on the temperature of their surroundings*)

### Look out for:

**Some animal bones in one of the tanks.** Can you tell what kind of animals the bones are from? Which one do you think has the most bones in its skeleton?

### Have a go at:

#### Animal detectives!

When the children have had a look around, read out the following clues one by one so they can use a process of elimination to work out which animal the clues refer to.

This reptile:

- ❖ Has scales...
- ❖ Has 4 legs...
- ❖ Is a pale yellow colour...
- ❖ Lives in the desert...
- ❖ Has a shell to hide in...

= **Egyptian tortoise!**

This reptile:

- ❖ Has scales...
- ❖ Lives in trees...
- ❖ Eats mice...
- ❖ Doesn't have any legs...
- ❖ Comes from a special island called Madagascar

= **Madagascan tree boa!**



This reptile:

- ❖ Has bumpy scales...
- ❖ Has 4 legs...
- ❖ Has sharp claws on its feet...
- ❖ Has a venomous bite...
- ❖ Has a bright yellow and black pattern...

= **Beaded lizard!**

### What is a reptile?

As a group, see if you can come up with a list of features that reptiles have. (*E.g. dry scales, bones, cold-blooded, lay leathery eggs on land. Depending on their prior knowledge, you may have to use questioning to help the children here.*)

### True or false?

**Snakes don't have any bones in their bodies.**

**FALSE:** Lots of people think that snakes have no bones because they are so flexible. Actually snakes have a long backbone just like ours, all the way down their body. They also have a skull and LOTS of ribs! Did you see the snake skeleton in the bone enclosure?



## Siamang Gibbon House

Look out for:

### Terrific trees!

There are lots of trees around this area. How many different kinds of tree can you spot from where you are standing?

- ❖ 0 : Keep trying, open your eyes!
- ❖ 1-3 : Jungle junior
- ❖ 4-6 : Fantastic forester
- ❖ 7 + : Expert Explorer!

This is an activity you could repeat in other spots around the zoo, or even on the coach on the way home!

**Don't forget to look in the water around the gibbons' island.** Can you see any animals there? (*some large fish*). What colours are they?

Have a go at:

### Gibbon X-Factor!

Sometimes siamang gibbon families like to sing very loudly. What do you think they might be trying to say? (*"This is our bit of forest – KEEP OUT!"*).

You can have a go at singing like the gibbons too! Split the group into two halves. One half should make a deep 'whoooooop, whoooooop!' sound, and at the same time the other half should make a quick, high, 'aaack ack ack ack ack!' sound.

If the gibbons don't sing back at you while you are there, listen out for them as you go round the rest of the zoo. They are very loud!



## Tropical House

### Look out for:

Any of the following animals...

- ❖ **A very hairy, slow animal** (*Linne's two-toed sloth*)
- ❖ **Some tiny monkeys** (*pygmy marmosets*)
- ❖ **Lots of busy ants** (*leaf-cutter ants*)
- ❖ **Some tiny, noisy frogs** (*yellow-throated frogs*)
- ❖ **An enormous pigeon with a big crest** (*Sclater's crowned pigeon*)

(You could split the class into teams and give each team one of the clues to find that animal. Or if you have a smaller group, give them one animal clue each.)

### Have a go at:

#### Be a super slow sloth!

Can you spot our sloth? They are well camouflaged and move very slowly so that other animals don't know they are there.

Try being a two-toed sloth – pretend to hang upside down and move very slowly! What would it be like to eat whilst hanging upside down?



#### Ant trackers

In the Science Gallery is a colony of leaf-cutter ants. Why do you think they are called leaf-cutters? (*because they use their powerful jaws to chew off bits of leaves and take them back to the nest.*)

Can you find one carrying a big piece of leaf and follow it along the tube all the way back into the nest?

### True or False?

**Leaf-cutter ants eat leaves.**

**FALSE:** Leaf-cutter ants actually use the leaves as compost to help them grow a kind of fungus in a special 'garden' inside their nest. The fungus that grows on the leaves is what the ants really like to eat.

## Semi-aquatic Mammals

Why do you think these animals are called semi-aquatic? What does it mean? *(they like to spend time on the land AND in the water).*

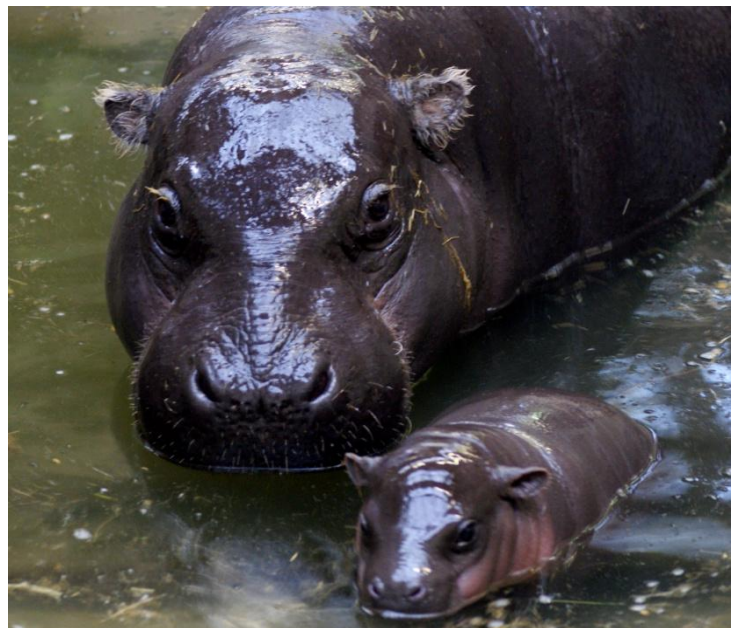
The pygmy hippo and the Brazilian tapir are both mammals like us. What do mammals usually have on their skin? *(fur or hair)*. Can you see any fur or hair on the hippos/tapirs? *(the tapirs have short, smooth fur all over. The hippos are hairless except for little tufts on their ears and tail!)*

**These mammals also have lots of special features to help them live in the water.**

### Look out for:

#### Pygmy hippo

- ❖ **Eyes, ears and nostrils on top of the hippo's head** *(so it can hide under the water and only have the top of its head poking out to see, hear, and breathe)*
- ❖ **Smooth shiny skin** *(to help it glide through the water)*
- ❖ **Big, spreading toes** *(which act as paddles for swimming)*
- ❖ **Short tail** *(used as rudder for steering)*



#### Tapirs

**If the tapirs are in the house, have a good look at their noses.** They are quite long and bendy! How do you think a tapir might use its long bendy nose in the water? *(They can actually use them as snorkels to breathe when they are underwater!)*

### Have a go at:

**Closing your eyes and using your nose to smell the pygmy hippo and tapirs.** Would you like your house to smell like this?

Why do you think it is so smelly? *(In the wild the pygmy hippos like to mark their bit of water with their smell. So they go to the toilet in the water to make it smell of them!)*

Luckily, the keepers fill the pools with fresh water every day so the hippo and tapirs stay clean and healthy.