



KS1 Animal Diets and Food Chains

This resource contains three activities to help children find out more about what animals eat and how energy is passed between living things in food chains. The first activity is designed to get children thinking about carnivores, herbivores and omnivores, and the children will need to look out for examples from these feeding groups as they go around the zoo. The next activity requires children to use the interactive animal ID screens in the Tropical House to find out about the diets of some of our animals. On the final page, the children have to think about what kinds of teeth carnivores, herbivores and omnivores have. They also have the opportunity to label a food chain and then create their own.

Curriculum Links

SCIENCE

Year 1 and 2 Working Scientifically

- identifying and classifying

Year 1 Animals, including humans

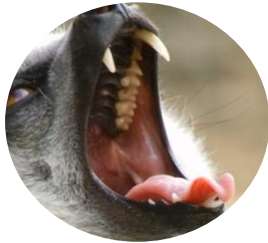
- identify and name a variety of common animals that are carnivores, herbivores and omnivores

Year 2 Animals, including humans

- Describe how animals obtain their food from plants and other animals, using the idea of a simple food chain, and identify and name different sources of food

Whose Teeth?

Animals have different types of teeth to suit the type of food they eat. Can you match the teeth to the correct label?



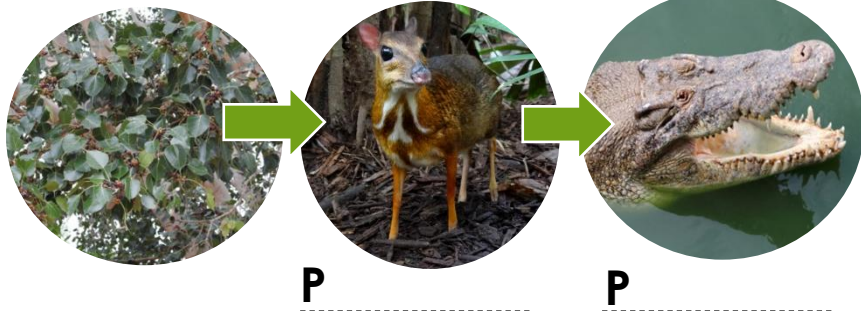
Herbivore

Omnivore

Carnivore

Food Chains

Animals get their energy from eating plants or other animals. This is known as a **food chain** because it shows how plants and animals are linked. Label the **predator** and **prey** in this food chain.



Finish the following food chain by adding two animals:



KS1 Animal Diets & Food Chains



Name:

Animals can be put into groups based on what they eat. **Carnivores** just eat meat. **Herbivores** just eat plants. **Omnivores** eat plants and meat.

Write or draw any **herbivores** you see at Marwell:

Write or draw any **carnivores** you see at Marwell:

Write or draw any **omnivores** you see at Marwell:

Who Eats What?

The animals in the Tropical House like to eat different foods. Can you use the screens to find out what these animals eat?



Linne's two-toed sloth:

- 1.
- 2.
- 3.

The sloth is a: *[circle the correct answer]*

Herbivore **Omnivore** **Carnivore**



Crocodile monitor:

- 1.
- 2.
- 3.

The crocodile monitor is a:

Herbivore **Omnivore** **Carnivore**



Pygmy marmoset:

- 1.
- 2.
- 3.

The pygmy marmoset is an:

Herbivore **Omnivore** **Carnivore**