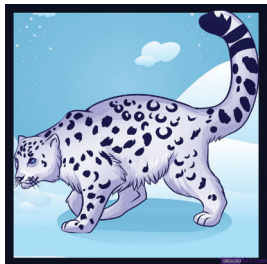
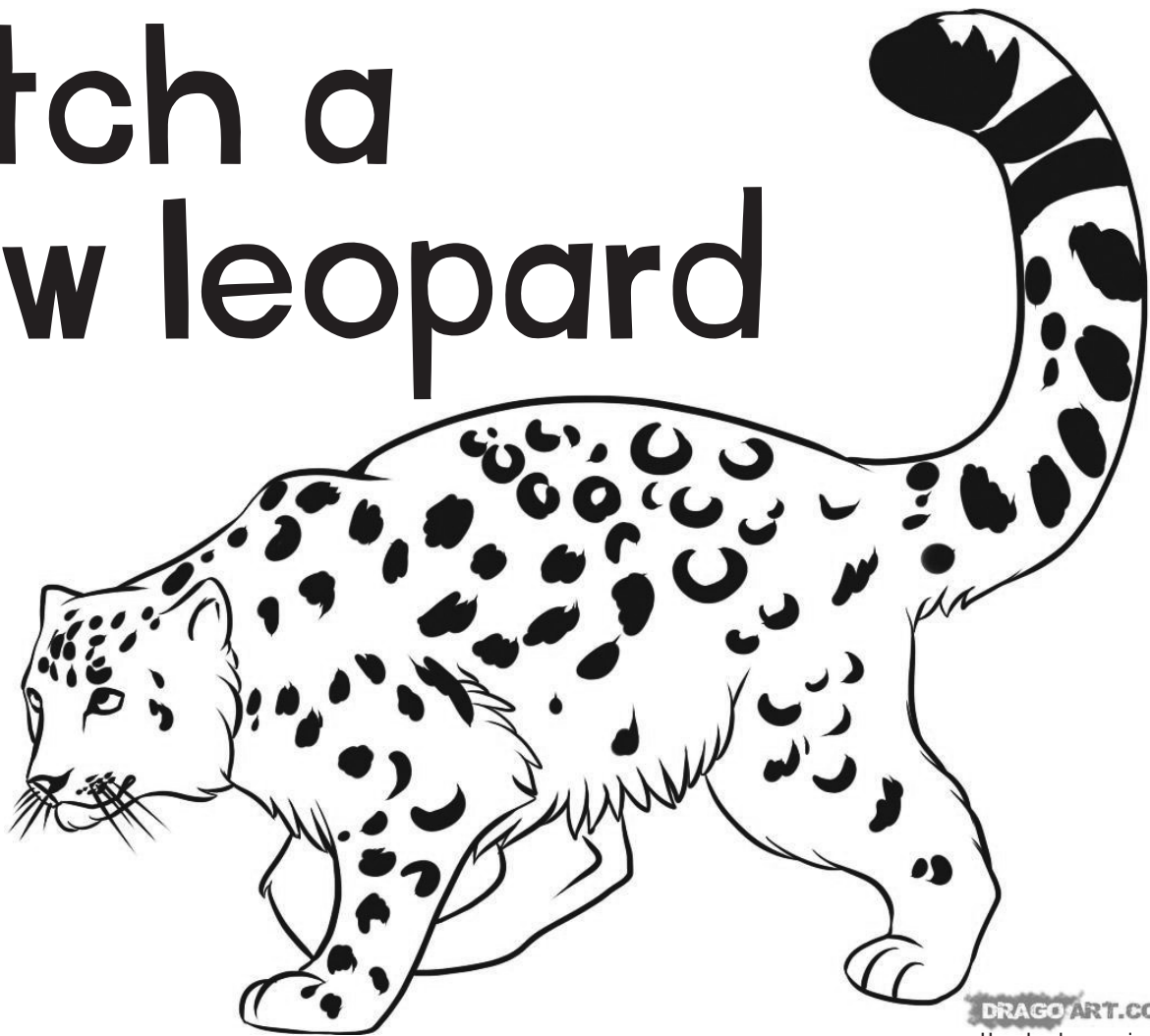
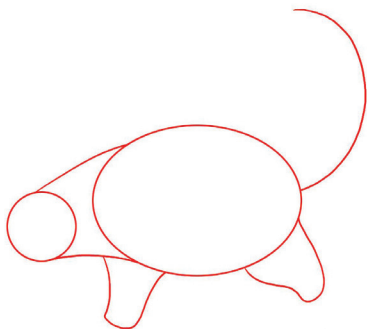


# sketch a snow leopard



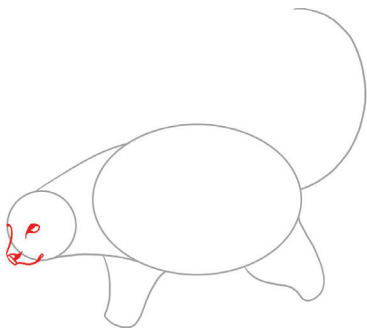
# step 1

Using a pencil, draw an egg shape for the body, then attach the shape for the neck, legs, and head. Draw a curled tail line.



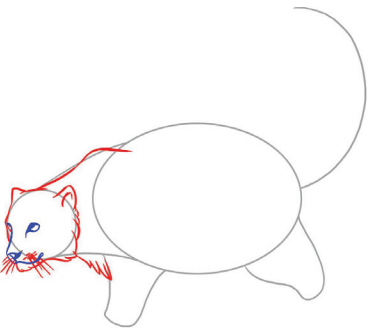
# step 2

Using a pen or coloured pencil, sketch out the shape of the face starting with the snout and lip. Then draw the bridge of the nose and shape of the eye.



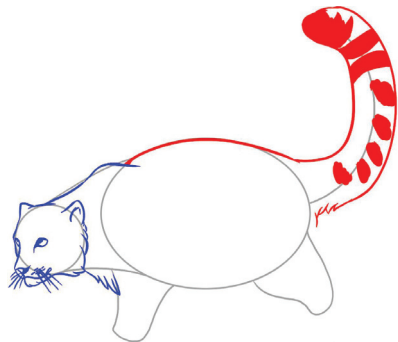
# step 3

Add the chin, whiskers, and small ear shapes. Sketch out the thick neck and chest.



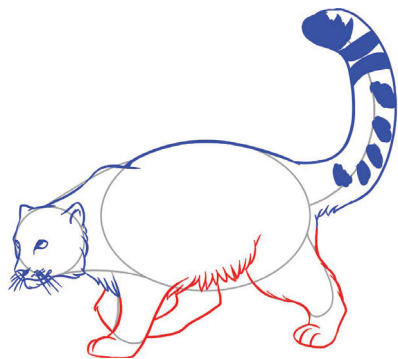
# step 4

Draw the lining for the cat's back, and then sketch out the thick, furry tail. Every part of this animal is very bold so try to express that through your drawing. Add the solid spots.



# step 5

Sketch out the belly and then draw the legs and large paws. The belly should be hairy looking and the hind legs should look large and meaty.



# step 6

Finally add the snow leopard's spots. Every leopard has unique spots. Before you add the markings, remember to erase all the guidelines and shapes you drew in step one.

